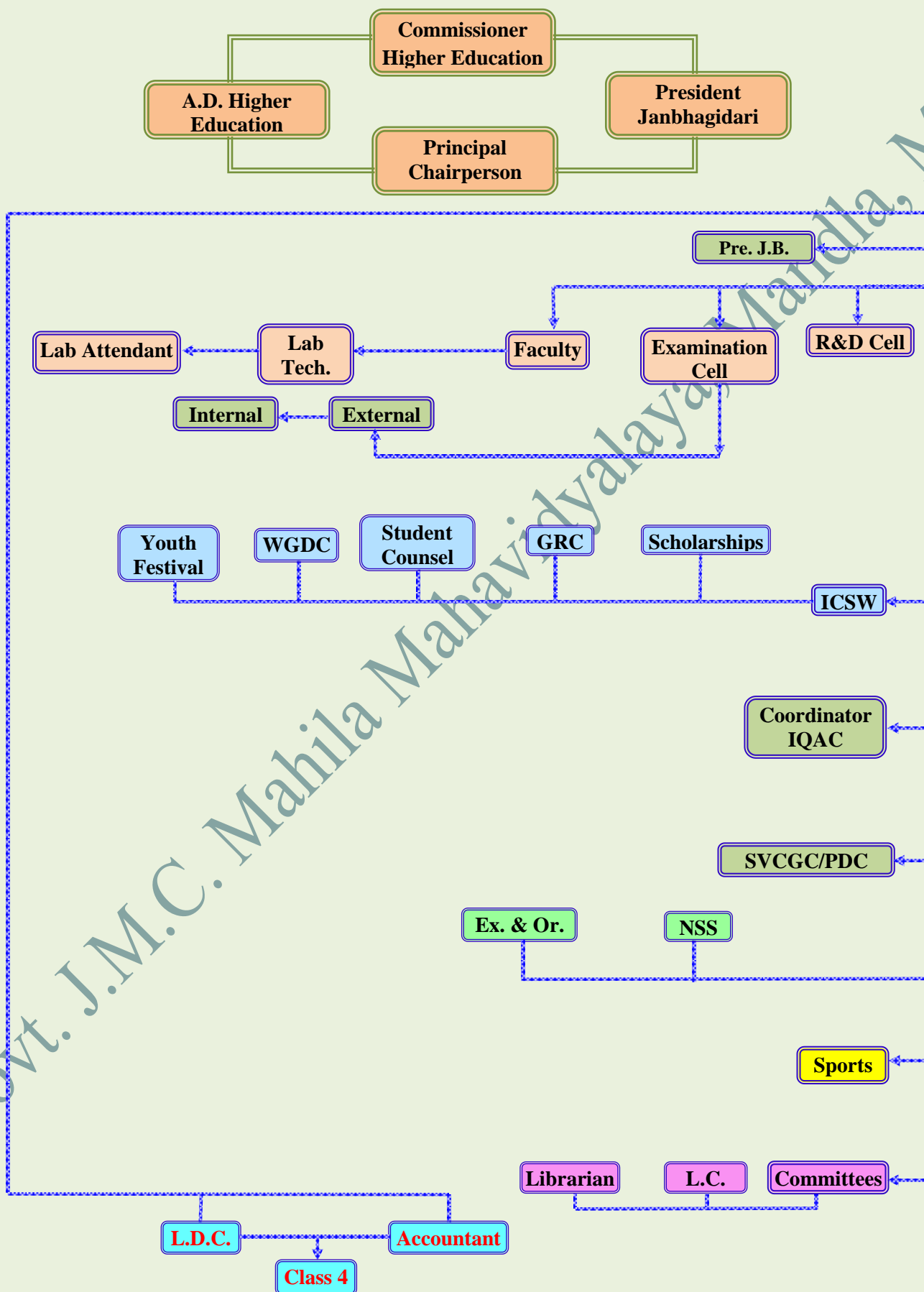


Institutional Organogram



Abbreviations:

- Pre JB- President Janbhagidari
- R&D Cell- Research & Development Cell
- ICSW- In Charge Students Welfare
- GRC- Grievance Redressal Cell
- WGDC- Women and Gender Development Cell
- PDC- Personality Development Cell
- SVCGC- Swami Vivekanand Career Guidance Cell
- NSS- National Service Scheme
- Ex & Or.-Extension & Outreached Activities
- LC- Library Committee
- LDC- Lower Division Clerk
- Class 4- Support Staff (Peon)


Principal
Govt. Jagannath Munnalal Choudhary
Mahila Mahavidyalaya, Mandla (M.P.)

Govt. Jagannath Munnalal
Choudhary Mahila
Mahavidyalaya, Mandla, M.P.